

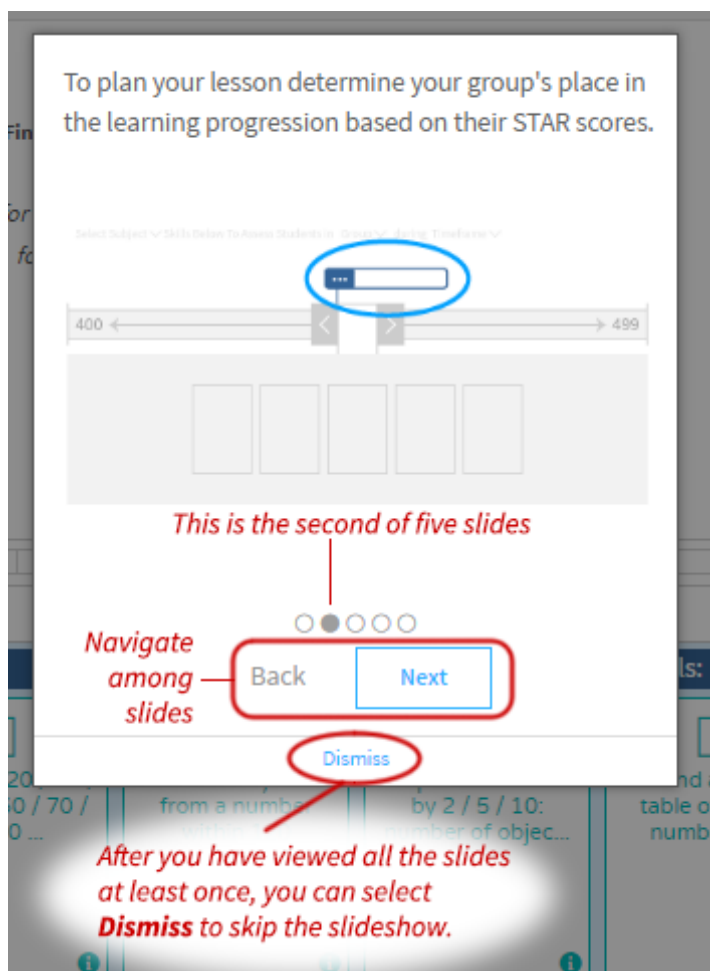


Planner™


## Using Planner for Your Lesson Plans

Planner brings together your curriculum, Star data on your student achievement, and high-quality instructional resources to help you develop Lesson Plans for your classroom. Using your selected state standards learning progression, Planner saves you time by making every step in the lesson planning process easier.

### The Planner Tour



When you first come to this page, you will see a brief slideshow of Planner in a pop-up window. Use the **Back** and **Next** controls at the bottom to change slides; on the final slide, select **Got it!** to end the slideshow.

After you have viewed all the slides at least once, a **Dismiss** link will appear at the bottom of the slideshow; select the link to skip the slideshow in the future. (You can view the slideshow again by selecting the  next to the page line.)

## Selections for Your Lesson Plan

- Use the drop-down lists in the navigation sentence at the top of the page to choose the subject **A**, class **B**, school **C**, and group **D** for the Lesson Plan.


**A**
**B**
**C**

*I'm creating a **Math** Lesson Plan for **Turner G5 Class 2** at **School 2***

*The plan is for **Whole Class** during **May 9 - 13***

**D**
**E**

- District administrators, district staff, and personnel assigned to more than one school will need to select a school **C**; school administrators, school staff, and personnel only assigned to one school will not need to select a school.
- Teachers will only see their own classes **B** and groups **D** that they have created themselves; school- and district-level users will see all classes and all the groups of students at the school.



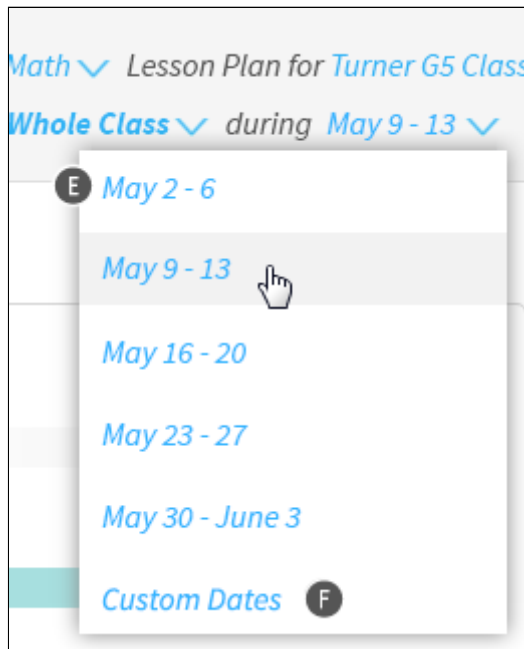
Manage Groups

Need to create or edit student groups? Select **Manage Groups** in the upper-right corner of the page. You will go to the [Manage Groups](/rdash/Groups) page in either the [Reading Dashboard \(/rdash/Groups\)](/rdash/Groups) or the [Math Dashboard \(/mdash/Groups\)](/mdash/Groups), depending on what subject you chose **A**.

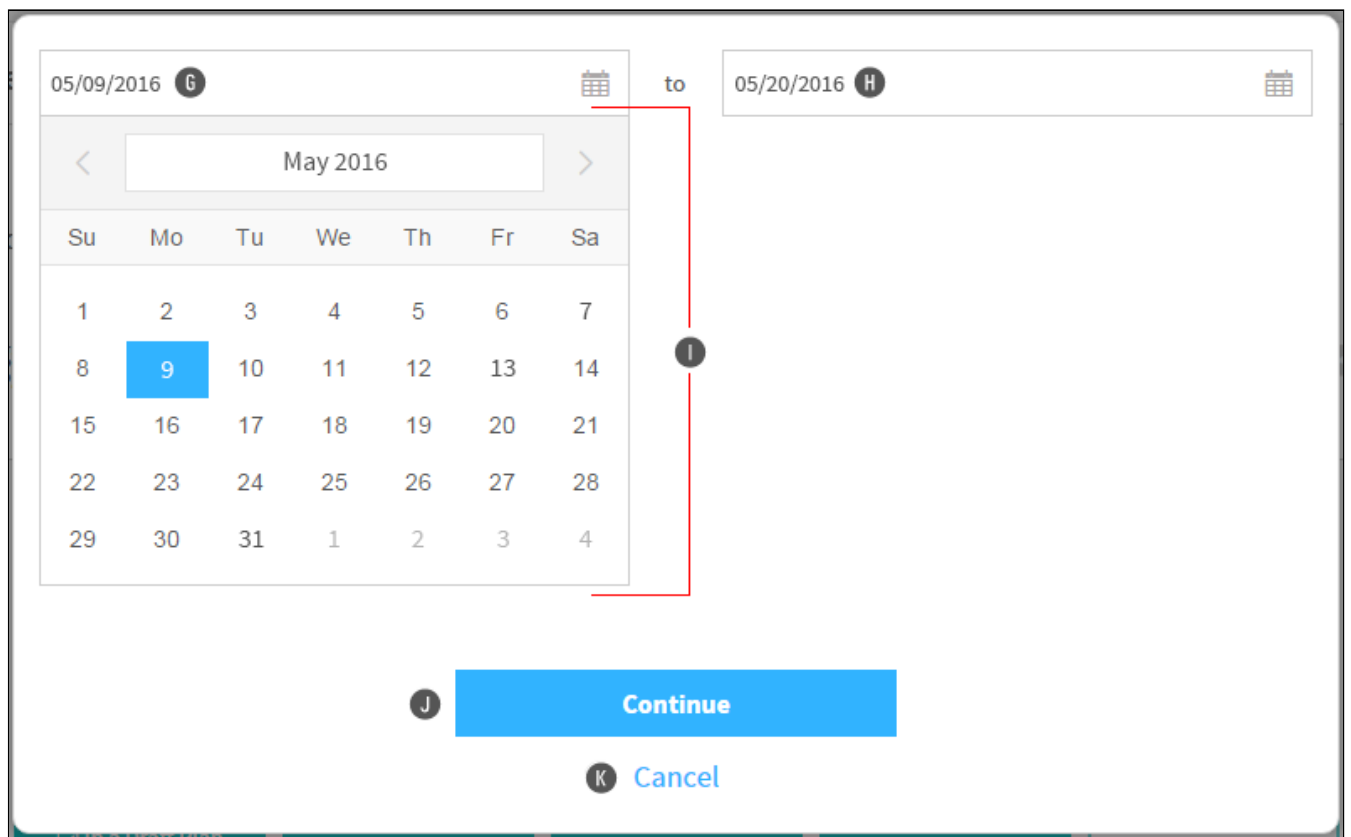
- For group (**D**), choose whether to plan for the whole class, all groups, or a single group:

Selection	What It Means
Whole Class	Produce one plan for every student in your class, where all students get the same assignment.
All Groups	Produce one plan for all students, and additional plans for each group in your class, where each group of students gets additional assignments.
Single Group	Produce one plan for just the students in a chosen group.

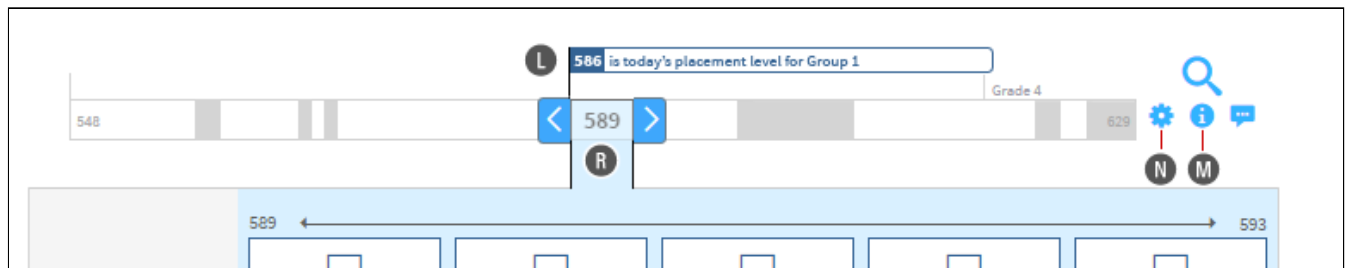
2. Next, choose the timeframe to plan for based on the date range **E**. You can choose one of the standard weekly timeframes or custom dates **F**. Note that you can have more than one Lesson Plan for the same dates.



If you choose to use custom dates, you can either type the start and end dates (**G** and **H**) or select them from the calendars that open as you click in each field **I**. You can make the Lesson Plan as short as one day or as long as 3 weeks. When you're done, select **Continue** **J** (or **Cancel** **K** if you decide not to use custom dates).

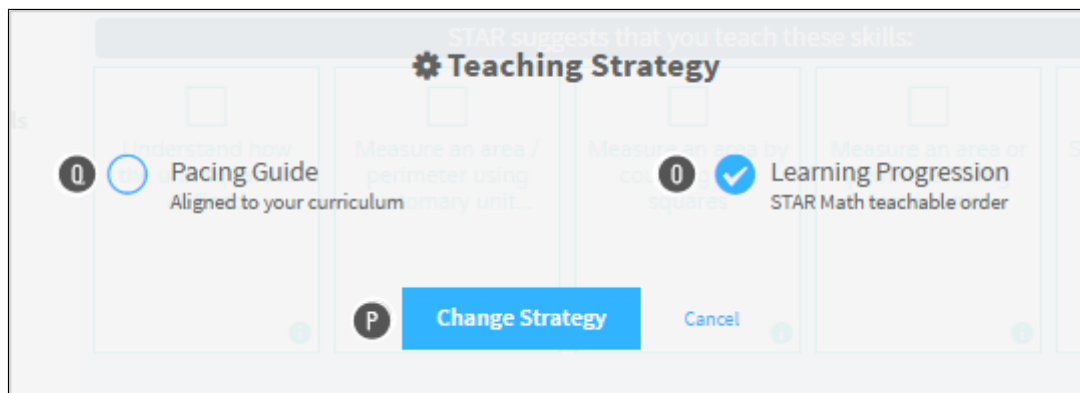


3. After making your selections, you will see the placement level **L**. Based on Star assessment data and Renaissance Learning's student growth models, the placement level is an estimated answer to the question: *"If the students in the class or group that I have selected were to take a Star assessment on the first day of the time period I have selected, what would their median Scaled Score be?"*



This estimation allows you to use Star's science (Star's proven validity and reliability) to have a very good sense of your students' achievement level as of today. The placement level is calculated using some of the students' recent tests and typical growth rates (for more information, see [Student Growth Percentile \(SGPInstruct\)](#)). Select the **i** on the right for more information **M**.

By default, the skills you will view are based on your school's pacing guide (which is aligned to your curriculum). If you would rather view skills based on the learning progression (Star's recommendations), select the **⚙️** on the right **N**. In the pop-up window, select **Learning Progression** **O**, and then **Change Strategy** **P**. (You can change back to the pacing guide **O** in the same way.)



4. The number in the slider above the pace bar **R** is the selected point in the pacing guide or learning progression based on the placement level. Select the arrows to either side of it (or click on the pacing guide/learning progression line itself) to raise or lower its value. As you do this, the following information will change:
  - ▶ The skills corresponding to the selected point **S**.
  - ▶ The entire range of Scaled Scores that the selected point falls midway between **T**.
  - ▶ The grades associated with the skills in the pace bar **U**.
  - ▶ The range of Scaled Scores for the five skills currently shown **V**.
  - ▶ The rectangles below the pace bar **W** show the topics that the skills belong to. **Note:** If you change your teaching strategy (see **N** above), the topic titles will change to the names of the standards in the learning progression.
5. Check the learning objectives (skills) that you want to include in your new Lesson Plan. In the example below, the teacher has chosen the second, third, and fourth skill cards shown.

The screenshot displays a user interface for selecting skills. At the top, there are navigation arrows and page numbers 586 and 590. Below this is a section titled "Select the Skills You Want to Teach:" containing five skill cards. The first card is grayed out, indicating it's already used, with a "Y" icon and "In a Draft Plan" text. The second, third, and fourth cards are white with checkmarks and "SUGGESTED" labels at the bottom. The fifth card is also grayed out with a "Z" icon and "Assigned" text. Below the cards, a list of "3 Skills" is shown, with the first skill selected and having a "C" icon and a close button. A "Back" button is on the left and a "Continue" button is on the right.

- Suggested skills have a "Suggested" indicator at the bottom **X**.
- Skills that are already used in previous lesson plans are shaded gray and marked with a message that tells you if they are in a draft plan **Y** or have been generated **Z**. A draft plan is a Lesson Plan that you have started, but that you haven't generated.
- Focus skills are also marked **A**; these are the skills that are most critical for success at each grade level.

Once selected, the skills are listed below the skill cards **B**. You can remove a skill by selecting the **X** on the right **C**.

- To see more information about a skill, such as the standard, select the **i** at the bottom of the card **D**. You will see the skill information in a new window, with the skill details shown by default. Select one of the categories on the left to see domains and standards, subskills, and prerequisite skills. (Some skills may not have subskills or prerequisites.)

Skill Details and Standards
✕

Identify relations between terms in 2 patterns

<b>Skill Details</b>	<b>Skill Short Name</b>
Domains and Standards	Identify relations between terms in 2 patterns
Subskills	<b>Skill Name</b>
	Identify relationships between corresponding terms in two different numerical patterns
	<b>Skill Area</b>
	Patterns

Close

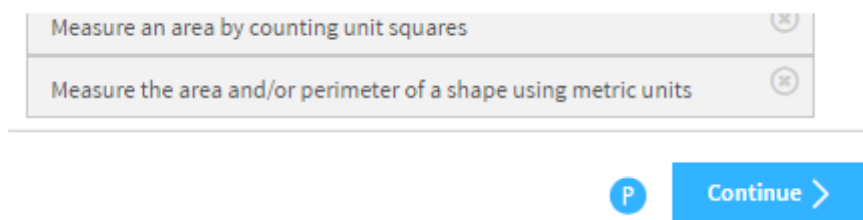
Select **Close** to close the information window.

7. If you want to find *specific* skills to include in a Lesson Plan, select the **Q** above the skill cards **E** .



▶ Then, search for and select skills you want to include in the Lesson Plan.

8. When you have finished choosing the skills to include in the Lesson Plan, select **Continue** > **P** .



## Reviewing Created Lesson Plans and Editing Draft Lesson Plans

At the bottom of the page, you'll see a list of the Lesson Plans that you have already created.

**Lesson Plans**

**Multi-Digit Whole Number and Decimal Fraction Operations - Plan 2**

August 31 - September 4 / 5 skills

Divide decimals through hundredths using various strategies | Demonstrate the reasoning used in solving a multiplication or division problem involving decimals through hundredths

AM2 - All Groups Ⓐ

[Review](#) | [Delete](#)

**Addition and Subtraction of Fractions - Plan 3**

September 7 - 11 / 4 skills

Recognize equivalent fractions by identifying common factors | Generate equivalent fractions by multiplying the numerator and denominator of a fraction by the same number

Whole Class Ⓑ Ⓒ

[Edit](#) | [Delete](#)

For generated Lesson Plans, select **Review (ReviewLessonPlan)** Ⓐ to see the skills, resources, and assessments that are in the plan once again; you cannot change generated Lesson Plans. You can also find teacher resources.

For Lesson Plans that you haven't generated yet, select **Edit (EditLessonPlan)** Ⓑ to finish choosing the skills, resources, and assessments and to generate the Lesson Plan. (These plans are automatically saved as drafts until you generate them.)

You can also select **Delete (DeleteLessonPlan)** Ⓒ to permanently remove either a draft or generated Lesson Plan.

### Related Topics

[Selecting the Skills to Teach \(CreateNewLessonPlan\)](#)

[Choosing Assignments \(ResourcesPlanning\)](#)

[Scheduling Assignments \(ReviewLessonPlan\)](#)

[Reviewing Lesson Plans \(ReviewLessonPlan\)](#)



[Editing Lesson Plans \(EditLessonPlan\)](#)

[Deleting Lesson Plans \(DeleteLessonPlan\)](#)

© 2016 Renaissance Learning. All Rights Reserved.